

# Parallel Type Air Gripper Standard Type

# 25A-MHZ2 Series

ø10, ø16, ø20, ø25, ø32, ø40



## How to Order

### Bore size

ø16 to ø25

25A-MHZ2-16 D [ ] - M9BW [ ]

Series compatible with secondary batteries

Number of fingers  
2 2 fingers

Bore size

10	10 mm
16	16 mm
20	20 mm
25	25 mm

Action  
D Double acting

Number of auto switches

Nil	2
S	1
n	n

Auto switch

Nil Without auto switch (Built-in magnet)

\* Refer to page 210 for the applicable auto switch model.

Finger position/option

Standard (MHQG2 compatible type)

Nil: Basic type



1: Side tapped mounting



2: Through-holes in opening/closing direction



Narrow type (MHQ2 compatible type)

N: Basic type



N1: Side tapped mounting



N2: Through-holes in opening/closing direction



3: Flat type fingers

The flat type fingers do not have standard and narrow options.



### Bore size

ø32, ø40

25A-MHZ2-32 D [ ] - M9BW [ ]

Series compatible with secondary batteries

Number of fingers  
2 2 fingers

Bore size

32	32 mm
40	40 mm

Action  
D Double acting

Number of auto switches

Nil	2
S	1
n	n

Auto switch

Nil Without auto switch (Built-in magnet)

\* Refer to page 210 for the applicable auto switch model.

Finger option

[Standard]

Nil: Basic type



1: Side tapped mounting



2: Through-holes in opening/closing direction



3: Flat type fingers



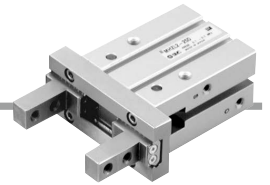
\* The 25A-series specifications and dimensions are the same as those of the standard model.

[Click here for details.](#)

# Parallel Type Air Gripper Long Stroke Type **25A-MHZL2 Series**



## How to Order



**25A - MHZL2 - 16 D**   **- M9BW**  

Series compatible with secondary batteries

Number of fingers  

2	2 fingers
---	-----------

Bore size

Symbol	Bore size [mm]
10	10 mm
16	16 mm
20	20 mm
25	25 mm

Action  

D	Double acting
---	---------------

Number of auto switches

Nil	2
S	1
n	n

Auto switch  

Nil	Without auto switch (Built-in magnet)
-----	---------------------------------------

\* Refer to [page 210](#) for the applicable auto switch model.

### Finger option

Nil: Basic type

1: Side tapped mounting

2: Through-holes in opening/closing direction

3: Flat type fingers



\* The 25A- series specifications and dimensions are the same as those of the standard model.

[Click here for details.](#)

Directional Control Valves

Air Cylinders

Related Products

Rotary Actuators

Air Grippers

Vacuum Equipment

Air Preparation Equipment

Clean Air Filters

Modular F.R.L./Pressure Control Equipment

Fittings/Flow Control Equipment

Detection Switches

Fluid Control Equipment

Electric Actuators

Auto Switches

Parallel Type Air Gripper with Dust Cover



# 25A-MHZJ2 Series

Parallel Type Air Gripper with Dust Cover: Long Stroke Type

# 25A-MHZL2 Series (Made to Order)

## How to Order



**25A - MHZJ2 - 16 D**  - **M9BW**

Series compatible with secondary batteries

Number of fingers

2	2 fingers
---	-----------

Bore size

10	10 mm
16	16 mm
20	20 mm
25	25 mm

Action

D	Double acting
---	---------------

Number of auto switches

Nil	2
S	1
n	n

Auto switch

Nil	Without auto switch (Built-in magnet)
-----	---------------------------------------

\* Refer to [page 210](#) for the applicable auto switch model.

Dust cover type

Nil	Chloroprene rubber (CR)
F	Fluororubber (FKM)
S	Silicone rubber (Si)

\* The 25A- series specifications and dimensions are the same as those of the standard model.

[Click here for details.](#)

## Long Stroke Type/ With Dust Cover (Made to Order)

**25A - MHZL2 - 16 D**  - **M9BW**  - **X5955**

Series compatible with secondary batteries

Number of fingers

2	2 fingers
---	-----------

Bore size/Stroke

Symbol	Bore size [mm]
10	10 mm
16	16 mm
20	20 mm

Action

D	Double acting
---	---------------

Number of auto switches

Nil	2
S	1
n	n

Auto switch

Nil	Without auto switch (Built-in magnet)
-----	---------------------------------------

\* Refer to [page 210](#) for the applicable auto switch model.

Dust cover type

Nil	Chloroprene rubber (CR)
F	Fluororubber (FKM)
S	Silicone rubber (Si)

\* The 25A- specifications and dimensions are the same as those of the MHZL2-X6110 (made to order individual specifications).

[Click here for details.](#)

# Low Profile Air Gripper

## 25A-MHF2 Series



### How to Order



**25A-MHF 2 - 12 D [ ] [ ] - M9BW [ ]**

Number of fingers  
 2 | 2 fingers

Series compatible with secondary batteries

Bore size [mm]

8	8
12	12
16	16
20	20

Action  
**D** | Double acting

Stroke

Nil	Short stroke
1	Medium stroke
2	Long stroke

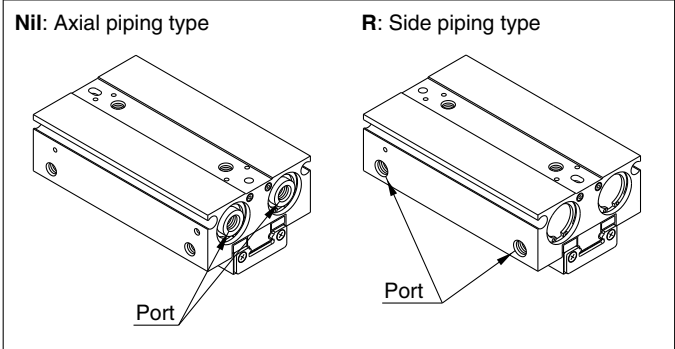
Number of auto switches

Nil	2
S	1
n	n

Auto switch  
 Nil | Without auto switch (Built-in magnet)

\* Refer to [page 210](#) for the applicable auto switch model.

Body option



\* The 25A- series specifications and dimensions are the same as those of the standard model.

[Click here for details.](#)

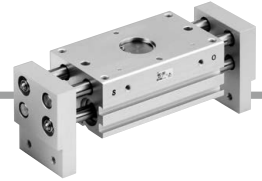
- Directional Control Valves
- Air Cylinders
- Related Products
- Rotary Actuators
- Air Grippers**
- Vacuum Equipment
- Air Preparation Equipment
- Clean Air Filters
- Modular F.R.L./Pressure Control Equipment
- Fittings/Flow Control Equipment
- Detection Switches
- Fluid Control Equipment
- Electric Actuators
- Auto Switches

# Parallel Type Air Gripper: Wide Type

## 25A-MHL2 Series

ø10, ø16, ø20, ø25, ø32

RoHS



### How to Order

25A-MHL2-20D- -M9BW-

Series compatible with secondary batteries

Wide opening

Number of fingers

2 2 fingers

Bore size

10	10 mm
16	16 mm
20	20 mm
25	25 mm
32	32 mm
40	40 mm

Action

D Double acting

Number of auto switches

Nil	2
S	1
n	n

Auto switch

Nil Without auto switch (Built-in magnet)

\* Refer to page 210 for the applicable auto switch model.

Opening/Closing stroke [mm]

Symbol	ø10	ø16	ø20	ø25	ø32	ø40
Nil	20	30	40	50	70	100
1	40	60	80	100	120	160
2	60	80	100	120	160	200

\* The 25A- series specifications and dimensions are the same as those of the standard model. (Weight is not the same.)

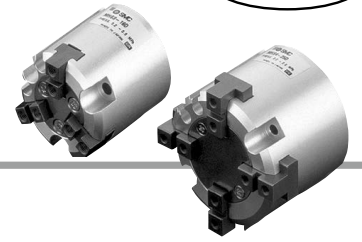
[Click here for details.](#)

# Parallel Type Air Gripper

## 25A-MHS□ Series

∅16, ∅20, ∅25

RoHS



### How to Order

**25A - MHS 3 - 20D - M9BW □**

Series compatible with secondary batteries

Number of fingers

3	3 fingers
4	4 fingers

Bore size

16	16 mm
20	20 mm
25	25 mm
32	32 mm

Action

D	Double acting
---	---------------

Number of auto switches

Nil	2
S	1

Auto switch

Nil	Without auto switch (Built-in magnet)
-----	---------------------------------------

\* Refer to [page 210](#) for the applicable auto switch model.

\* The 25A- series specifications and dimensions are the same as those of the standard model.

[Click here for details.](#)

Directional Control Valves

Air Cylinders

Related Products

Rotary Actuators

Air Grippers

Vacuum Equipment

Air Preparation Equipment

Clean Air Filters

Modular F.R.L./Pressure Control Equipment

Fittings/Flow Control Equipment

Detection Switches

Fluid Control Equipment

Electric Actuators

Auto Switches

# Parallel Type Air Gripper 3-Finger Type with Dust Cover

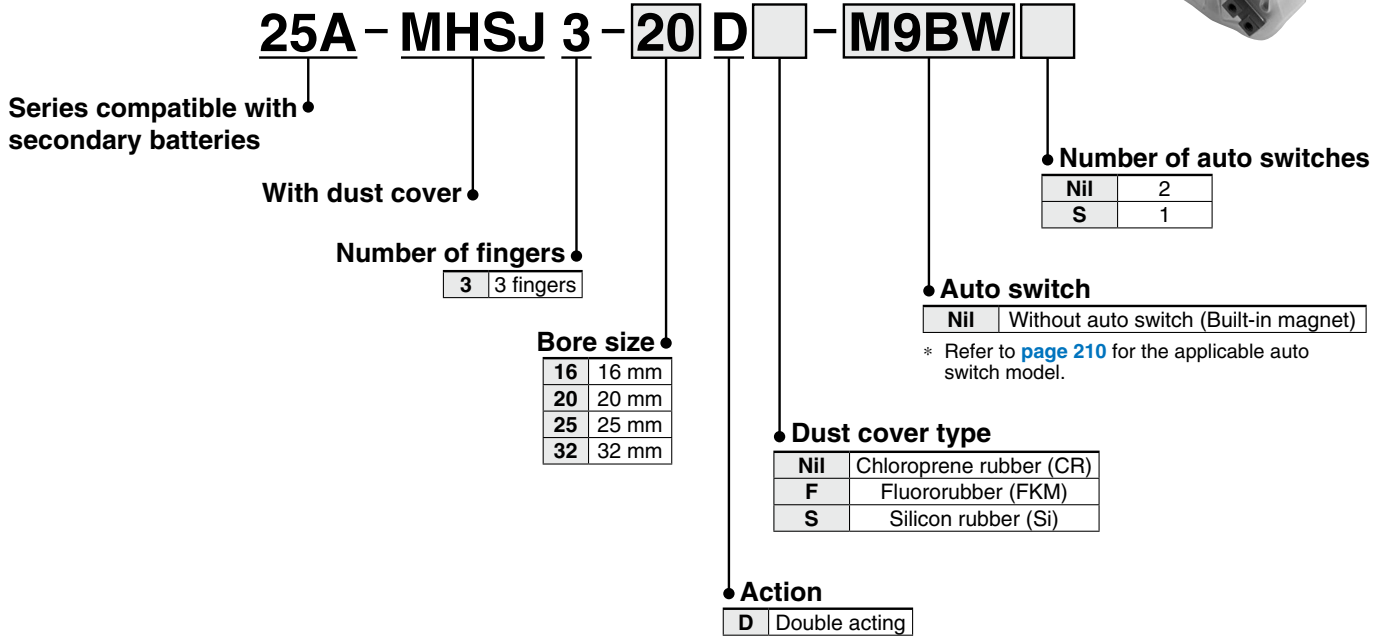
## 25A-MHSJ3 Series

ø16, ø20, ø25

RoHS



### How to Order



\* The 25A- series specifications and dimensions are the same as those of the standard model.

[Click here for details.](#)

# 180° Angular Type Air Gripper Cam Type

# 25A-MHY2 Series

ø10, ø16, ø20, ø25



## How to Order

25A - MHY 2 - 16 D 2 - M9BW

Series compatible with secondary batteries

Number of fingers

2	2 fingers
---	-----------

Bore size

10	10 mm
16	16 mm
20	20 mm
25	25 mm

Action

D	Double acting
---	---------------

Number of auto switches

Nil	2
S	1
n	n

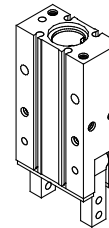
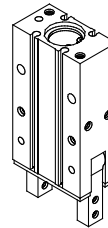
Auto switch

Nil	Without auto switch (Built-in magnet)
-----	---------------------------------------

\* Refer to [page 210](#) for the applicable auto switch model.

Finger option

Nil: Standard tapped mounting      2: Through-holes in opening/closing direction



\* The 25A- series specifications and dimensions are the same as those of the standard model.

[Click here for details.](#)

Directional Control Valves

Air Cylinders

Related Products

Rotary Actuators

Air Grippers

Vacuum Equipment

Air Preparation Equipment

Clean Air Filters

Modular F.R.L./Pressure Control Equipment

Fittings/Flow Control Equipment

Detection Switches

Fluid Control Equipment

Electric Actuators

Auto Switches