



Diaphragm Type Air Operated Valve LVA200-01-C-X22

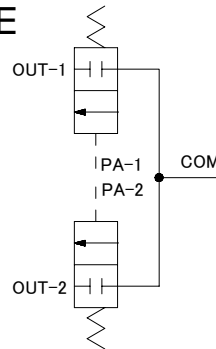
SMC CORPORATION
1-16-4 Shimbashi, Minato-ku
Tokyo 105-0004, JAPAN
URL:<http://www.smcworld.com>

Feature 1: Diaphragm type air operated high purity chemical valve (4 -position 3- port)

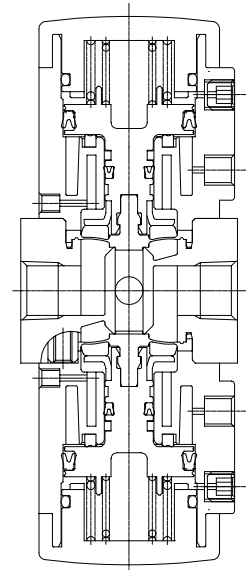
- Two-unit 2-port valves are used with a common pressure port "COM". (Refer to the symbol below.)

Feature 2: Parts that come in contact with the working fluid (diaphragm and body) are made of PTFE (polytetrafluoroethylene).

Feature 3: Space-saving design with mounting brackets.



Symbol



Construction

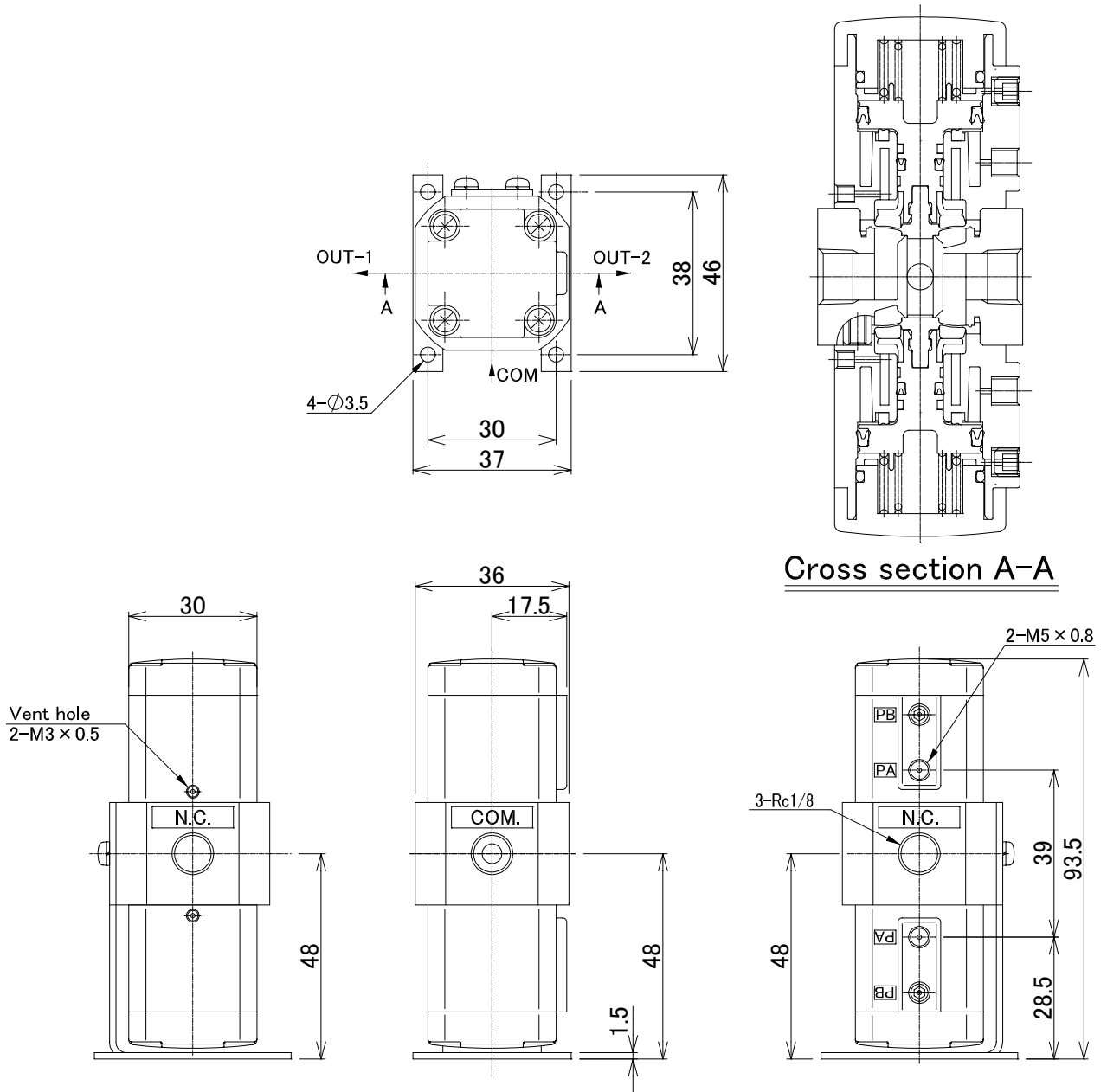
Warning

The products featured herein have been designed for use in various operating conditions. The ultimate responsibility for determining their compatibility with a specific system belongs to the person designing such a system. System design and specifications should be decided following any necessary analyses and/or tests. The designer of the system is also responsible for the guarantee of the expected performance and safety of the system.

Specifications

Operating pressure	0 to 0.5MPa	
Pilot pressure	0.3 to 0.5MPa	
Back pressure	0.3MPa or less	
Fluid	Limit fluids to those that are non-corrosive to wetted parts material	
Orifice diameter	Ø4mm	
Cv factor	0.35	
Fluid temperature range	0 to 100°C	
Ambient temperature range	0 to 60°C	
Material for wetted parts	Diaphragm	PTFE
	Body	PTFE
Port size	Rc 1/8	
Pilot port size	M5	

Dimensions: mm



⚠ Caution

To ensure the safest possible operation of this product, please be sure to read thoroughly the "Safety Instructions" in our "Series LV (High Purity Chemical Valve)" catalog (CAT.E709) before use.