

# Air Slide Table

(Built-in end lock mechanism)

## MXF16/20-\*\*R-X32

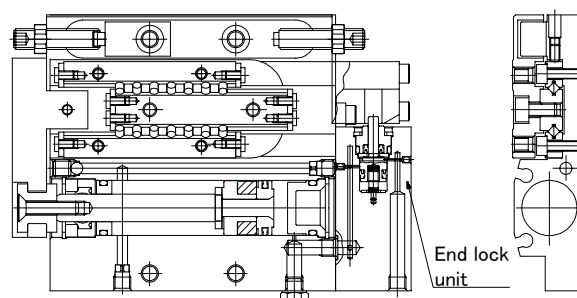
**SMC CORPORATION**

 1-16-4 Shimbashi, Minato-ku  
 Tokyo 105-0004, JAPAN

 URL: <http://www.smcworld.com>
**Feature 1: Built-in end lock mechanism added to air slide table.**

### Specifications

Bore size	Ø16mm   Ø20mm
Stroke length tolerance	+1 0 mm
Stroke adjustment range	Extend stroke 5mm Retract stroke 5mm
Holding force	60N
Piping port sizes	M5 × 0.8
Fluid	Air
Action	Double acting
Operating pressure	0.15 to 0.7MPa
Proof pressure	1.05MPa
Ambient and fluid temperature	-10 to 60°C
Operating speed range	50 to 500mm/s
Bumper	Urethane bumper (Both sides)
Lubrication	Not required (Non-lube)


**Construction**

### How to Order

**MXF16-30R-A93LS-X32**

Bore size

16	Ø16
20	Ø20

Stroke

Symbol	Stroke	MXF16	MXF20
30	30mm	○	○
50	50mm	○	○
75	75mm	○	○
100	100mm	—	○

Type of auto switch

Nil	Without auto switch
-----	---------------------

Number of auto switches

Nil	2 pcs.
S	1 pc.
n	n pcs.

Lead wire length

Nil	0.5m
L	3m

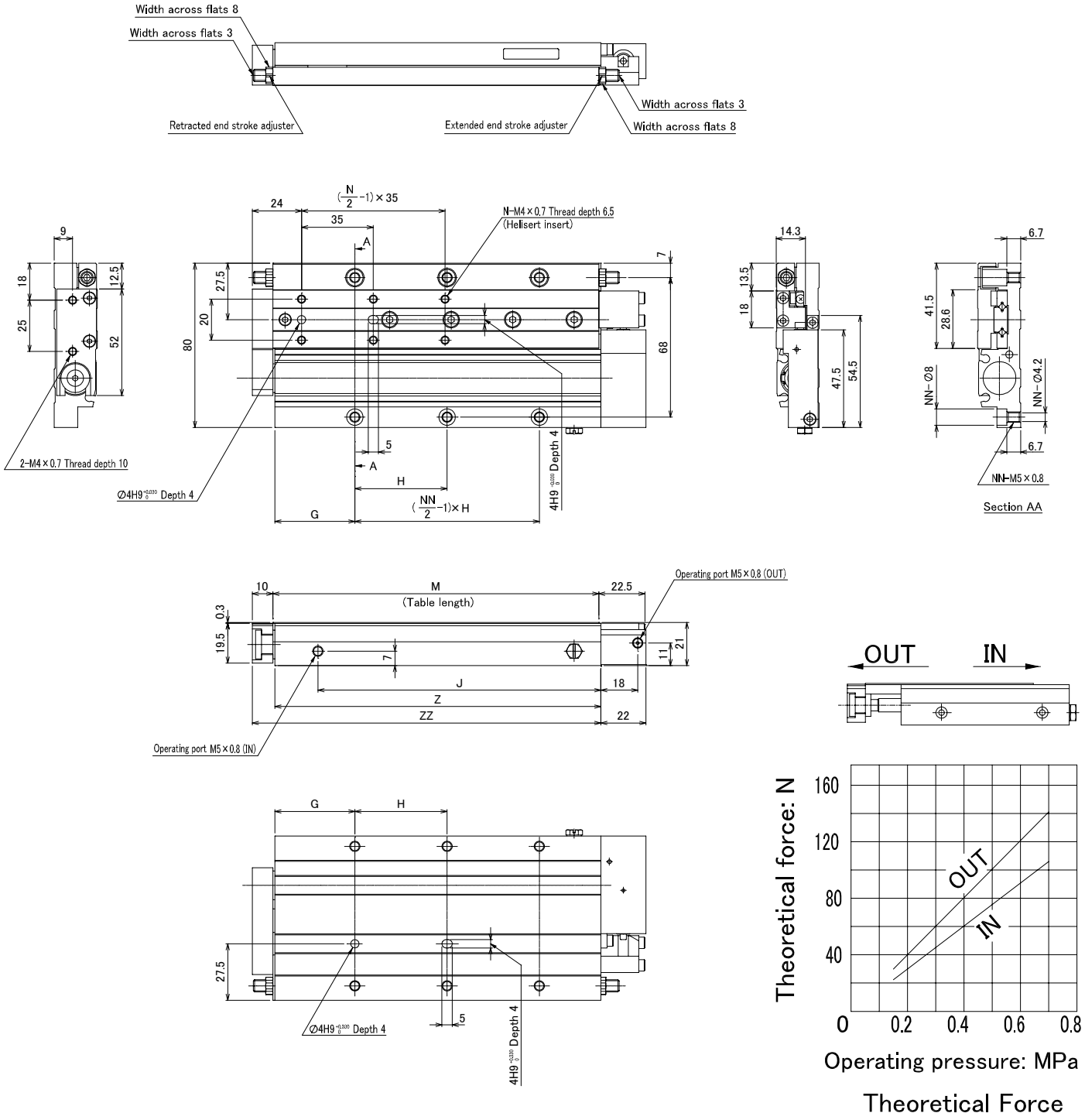
Note 1) Please refer to our Best Pneumatics catalog for more detailed auto switch specifications.

Symbol	Type of Auto switch	
A90	Reed switch	D-A90
A93		D-A93
A96		D-A96
A90V		D-A90V
A93V		D-A93V
A96V		D-A96V

Symbol	Type of Auto switch	
F9N	Solid state switch	D-F9N
F9P		D-F9P
F9B		D-F9B
F9NV		D-F9NV
F9PV		D-F9PV
F9BV		D-F9BV

Symbol	Type of Auto switch	
F9NW	2-color indicator solid state switch	D-F9NW
F9PW		D-F9PW
F9BW		D-F9BW
F9NWV		D-F9NWV
F9PWV		D-F9PWV
F9BWV		D-F9BWV

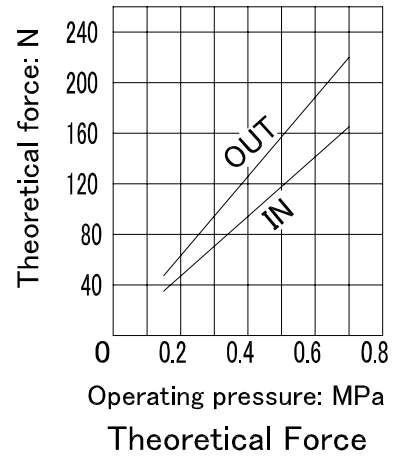
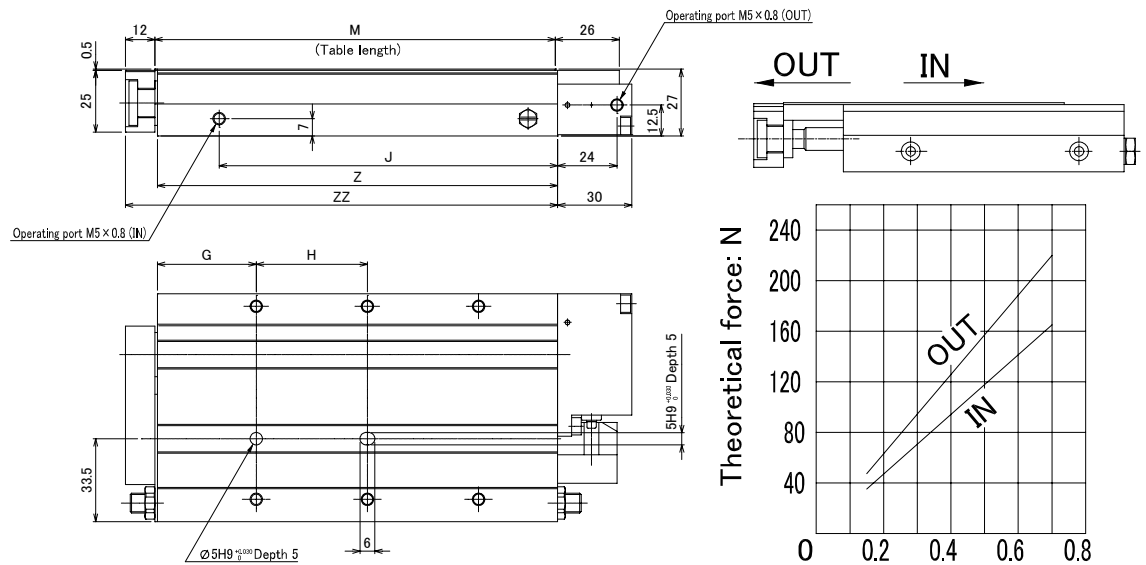
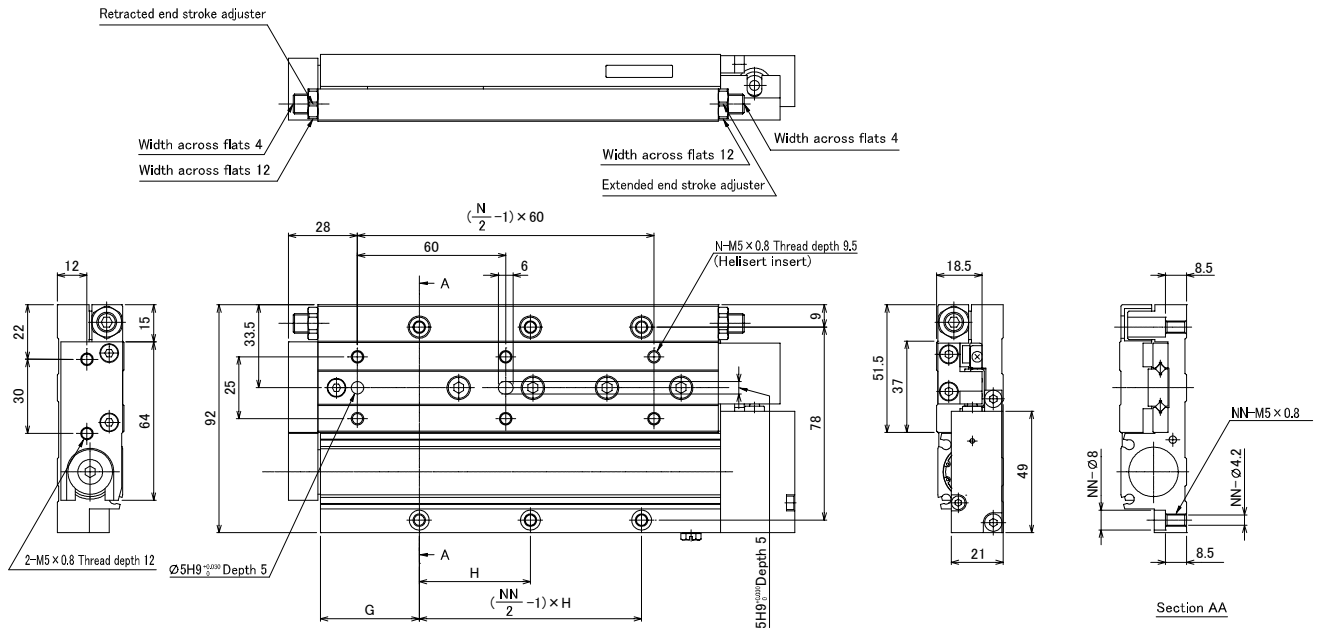
# Dimensions (MXF16-\*\*R-X32)



Dimensions: mm

Stroke	Model	N	G	H	NN	J	M	Z	ZZ	Weight (g)
30	MXF16-30R-X32	4	29	25	4	62	83	83	94	460
50	MXF16-50R-X32	6	29	55	4	92	113	113	124	600
75	MXF16-75R-X32	6	39	45	6	138	159	159	170	790

# Dimensions (MXF20-\*\*R-X32)



Dimensions: mm

Stroke	Model	N	G	H	NN	J	M	Z	ZZ	Weight (g)
30	MXF20-30R-X32	4	29	30	4	69	91	91	104	770
50	MXF20-50R-X32	4	36	45	4	89	113	113	126	920
75	MXF20-75R-X32	6	40	45	6	137	162	162	175	1230
100	MXF20-100R-X32	6	59	60	6	187	211	211	224	1540

## Caution

To ensure the safest possible operation of this product, please be sure to read thoroughly the "Safety Instructions" in our "Best Pneumatics" general catalog before use. For precautions on end lock, please refer to our "Series MXQ Precautions for Handling Functional Options."