

! Contact our sales office for delivery dates and prices as this is a special model.

Specialized Product

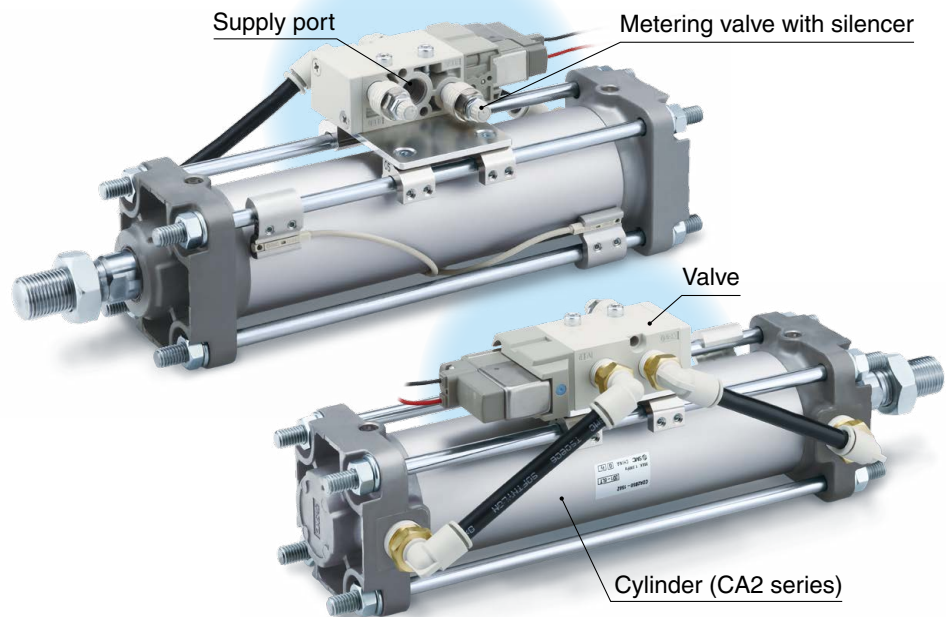
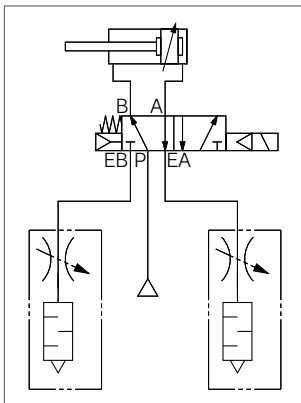
Point to Group
P.G. information

Valve Mounted Cylinder

CA2-X2968

Features

- Compact integration of a valve, cylinder, and two metering valves with silencers
Saves labor and energy

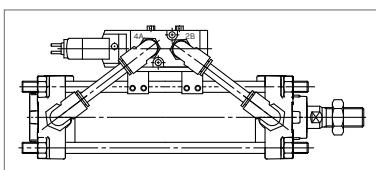


- Overall length reduced by up to 75 mm compared with the existing CV3 series

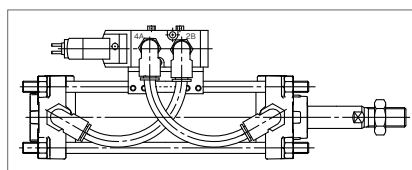
321 mm → 246 mm (Compared with ø40, 100 mm stroke)

- The overall length and mounting dimensions are interchangeable with the standard cylinder of the CA2 series.
- Change between rod extended and rod retracted positions when energized by switching the piping connections or reversing the valve direction.

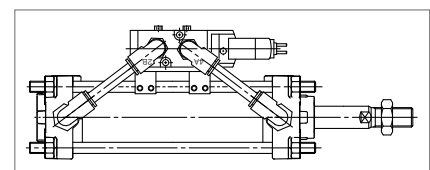
* Default setting: rod extended when energized



Basic type/
Rod extended when energized



Switched piping connections/
Rod retracted when energized



Reverse valve direction/
Rod retracted when energized



Caution

To ensure the safest possible operation of this product, please be sure to thoroughly read the "Safety Instructions" in our "Best Pneumatics" catalog before use.

SMC Corporation 4-14-1, SOTO-KANDA, CHIYODA-KU, TOKYO 101-0021, JAPAN URL: <https://www.smcworld.com>

©2019 SMC Corporation All Rights Reserved



SP172X-024E
P: XP