

 Contact our sales office for delivery dates and prices as this is a special model.

SP123X-023E  
P: RQ



*P.G.Information (Specialized Product)*

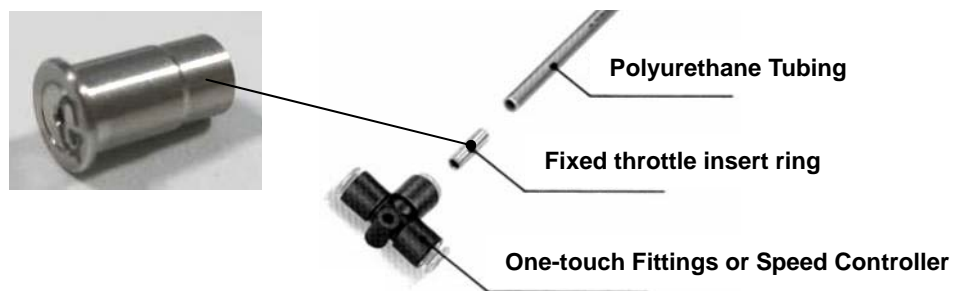
## Fixed throttle insert ring (SUS303)

SMC CORPORATION  
4-14-1, SOTO-KANDA,  
CHIYODA-KU,  
TOKYO 101-0021, JAPAN  
URL <http://www.smcworld.com>

TJ—\*—X149—\*

### ■ Features

- **Fixed orifice** : Restrict the flow rate (cylinder speed) to a specific level without adjustments.
- **SUS303** : Applicable to secondary battery industry (copper free)



### ■ Specifications

Applicable tubing material	Polyurethane
Fluid	Air
Max. operating pressure	1.0MPa <sup>Note 1)</sup>
Ambient and fluid temperature	-5~60°C (No freezing)

Note 1) Please mind the operating pressure range and the operating temperature range.

### ■ How to Order

TJ—**0425**—X149—**0.7**

● Tubing model

<b>0425</b>	O.D.4mm I.D.2.5mm
<b>0604</b>	O.D.6mm I.D.4mm

● Fixed orifice

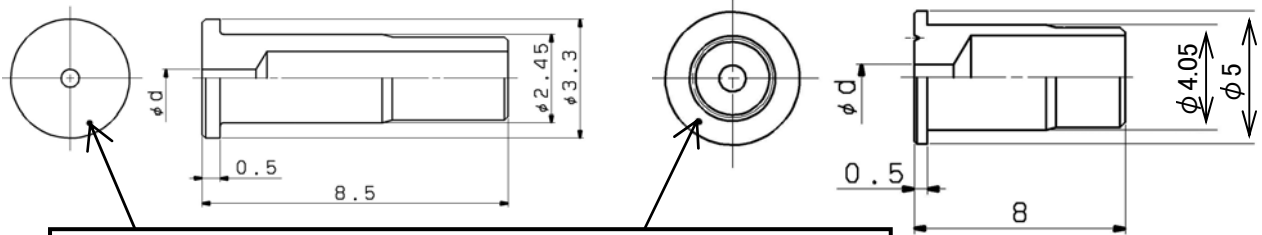
<b>0.2</b>	0.2±0.02 mm
<b>0.5</b>	0.5±0.02 mm
<b>0.7</b>	0.7±0.02 mm
<b>0.9</b>	0.9±0.02 mm
<b>1.1</b>	1.1±0.02 mm
<b>1.3</b>	1.3±0.02 mm

Tubing model	Fixed orifice					
	0.2	0.5	0.7	0.9	1.1	1.3
<b>0425</b>	●	●	●	●	●	—
<b>0604</b>	—	●	●	●	●	●

## ■ Dimensions (mm)

TJ-0425-X149-\*

TJ-0604-X149-\*



A letter is marked to identify the fixed throttle size.

$\phi d$	Letter	
	TJ-0425	TJ-0604
$0.2 \pm 0.02$	B	—
$0.5 \pm 0.02$	E	E
$0.7 \pm 0.02$	G	G
$0.9 \pm 0.02$	I	I
$1.1 \pm 0.02$	K	K
$1.3 \pm 0.02$	—	M

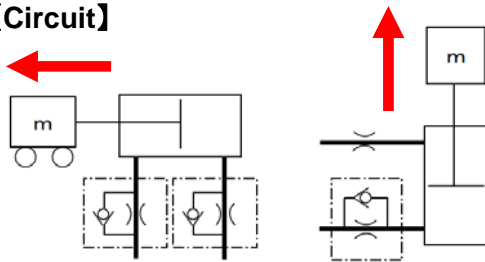


## ■ Referential data on fixed throttle size

(The values below are not guaranteed. Please make sure that the performance of the product satisfies your requirements under the actual conditions of use.)

When used with a CQ2 compact cylinder and AS fixed throttle speed controller.

### 【Circuit】



Horizontal (cylinder with guide)

Vertical

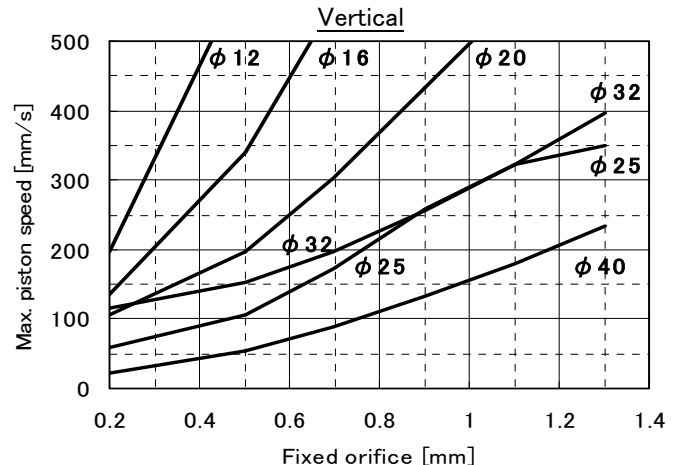
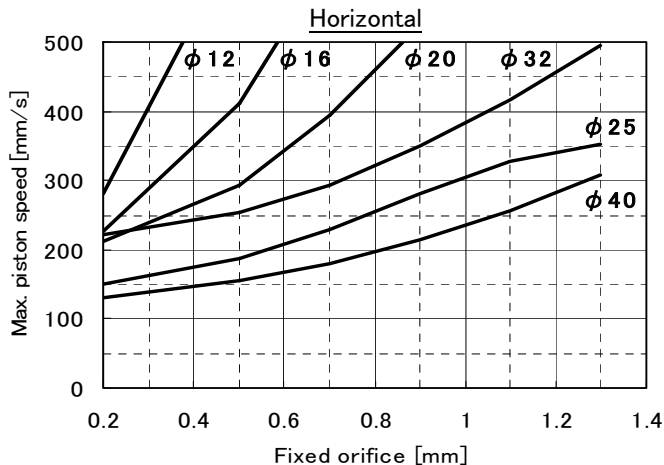
### 【Detailed conditions】

Cylinder bore size	$\phi 12$	$\phi 16$	$\phi 20$	$\phi 25$	$\phi 32$	$\phi 40$	
Cylinder stroke	30mm			50mm			
Load mass	Horizontal	1.6kg	3kg	5kg	8kg	12kg	20kg
	Vertical	0.8kg	1.5kg	2.5kg	4kg	6kg	10kg
Fixed throttle speed controller	AS1201F-M5-04-*X250				AS2201F-01-06-*X250		
Tubing (Length)	TU0425 (1.0m)				TU0604 (1.0m)		
Valve	SY3120				SY5120		
Operating pressure	0.5MPa						

## 【Fixed throttle size and max. piston speed】

(Please refer to the "Best Pneumatics" catalog for the allowable kinetic energy.)

\*The positions of the  $\phi 25$  and  $\phi 32$  lines are switched since the operating conditions (the fixed throttle speed controller, tubing and the valve) are different.



Caution To ensure the safest possible operation of this product, please be sure to thoroughly read the "Safety Instructions" in our "Best Pneumatics" catalog before use.